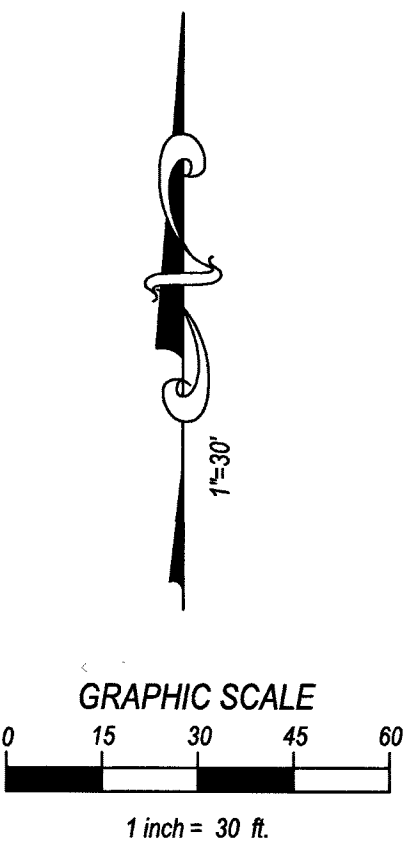


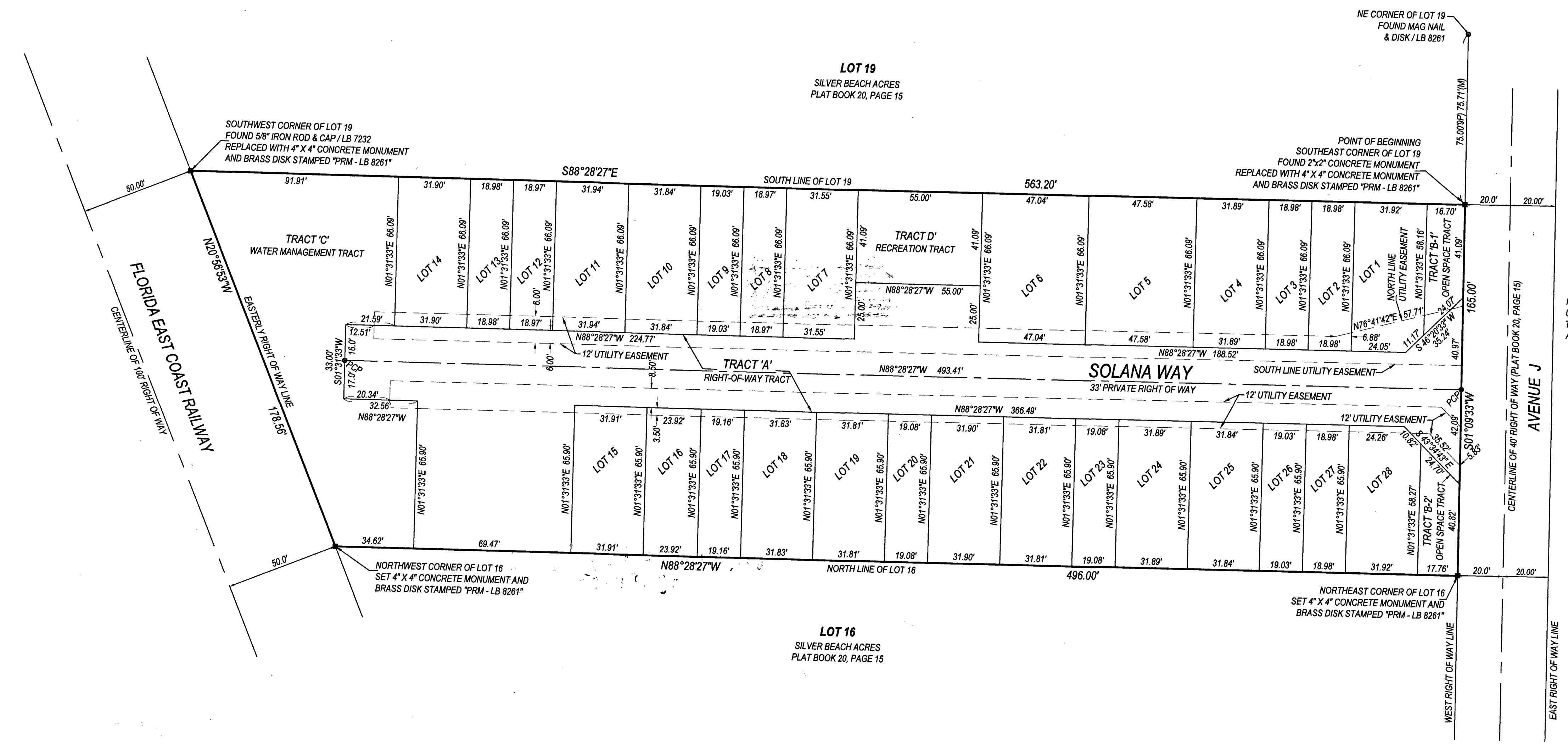
VILLAS OF SOLANA, A TOWNHOUSE PROJECT

A SUBDIVISION IN SECTION 29, TOWNSHIP 42 SOUTH, RANGE 43 EAST, CITY OF RIVIERA BEACH, PALM BEACH COUNTY, FLORIDA.
BEING A REPLAT OF LOTS 17 AND 18, SILVER BEACH ACRES PLAT NO. 2, PLAT BOOK 20, PAGE 15, PUBLIC RECORDS OF PALM BEACH COUNTY, FLORIDA.

SHEET 1 OF 2



85
B



TRACT CALCULATIONS:		
TRACT	SQUARE FOOTAGE	ACREAGE
A	21485.49	0.49
B-1	838.30	0.02
B-2	872.40	0.02
C	9544.13	0.22
D	3634.94	0.08

LOT	SQUARE FOOTAGE	ACREAGE
1	2078.61	0.05
2	1254.66	0.03
3	1254.66	0.03
4	2107.67	0.05
5	3144.71	0.07
6	838.30	0.02
7	872.40	0.02
8	954.41	0.03
9	1257.99	0.03
10	2104.30	0.05
11	2110.65	0.05
12	1253.87	0.03
13	1254.29	0.03
14	2108.04	0.05
15	2103.70	0.05
16	1578.79	0.04
17	1263.16	0.03
18	2098.40	0.05
19	2096.67	0.05
20	2102.57	0.05
21	2096.64	0.05
22	1257.56	0.03
23	2102.46	0.05
24	2102.46	0.05
25	1250.79	0.03
26	1254.27	0.03
27	1250.79	0.03
28	2074.55	0.05

NOTE: UTILITY EASEMENT EXPANDS THROUGH LOTS B-1, 1 & 2 AS SHOWN

NOTICE: THIS PLAT, AS RECORDED IN ITS GRAPHIC FORM, IS THE OFFICIAL DEPICTION OF THE SUBDIVIDED LANDS DESCRIBED HEREIN, AND WILL IN NO CIRCUMSTANCES BE SUPPLANTED IN AUTHORITY BY ANY OTHER GRAPHIC OR DIGITAL FORM OF THE PLAT. THERE MAY BE ADDITIONAL RESTRICTIONS THAT ARE NOT RECORDED ON THIS PLAT THAT MAY BE FOUND IN THE PUBLIC RECORDS OF THIS COUNTY.*

* ABBREVIATIONS:
LS = LICENSED SURVEYOR
PSM = FLORIDA LICENSED SURVEYOR & MAPPER
LB = LICENSED BUSINESS
PB = PLAT BOOK
O.R.B. = OFFICIAL RECORD BOOK
PG = PAGE
SQ. FT. = SQUARE FEET
P.E. = PROFESSIONAL ENGINEER
PRM = PERMANENT REFERENCE MONUMENT
NAD = NORTH AMERICAN DATUM

LEGEND
■ SET 4" X 4" CONCRETE MONUMENT AND BRASS DISK *PRM-LB 8261*
○ SET 1/2" IRON ROD AND CAP *LB 8261* OR NAIL AND DISK *PCP-LB 8261*

PRINCIPAL MERIDIAN SURVEYING INC.
4546 CAMBRIDGE STREET
WEST PALM BEACH, FL 33415
PHONE 933-478-7764
WWW.PMSURVEYING.NET
JOB # 22-0136

